



ORANGEBURG COUNTY
SUSTAINABILITY PLAN

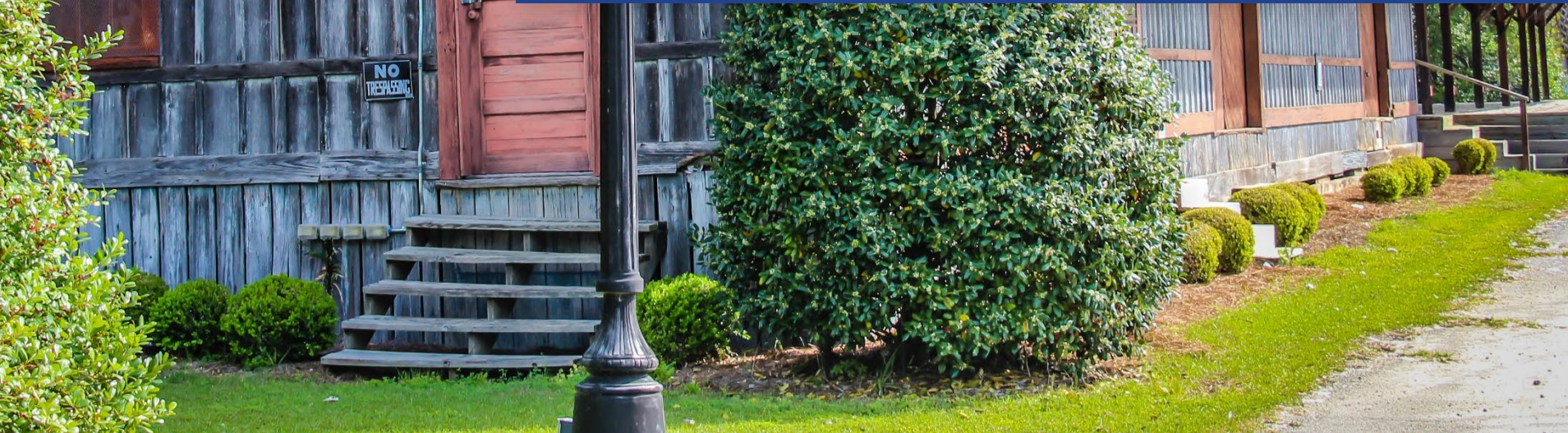


Smart Growth Summit

October 28, 2024



Welcome!



What is the Smart Growth Summit?

Opportunity for residents to:



Learn about current growth trends and efforts



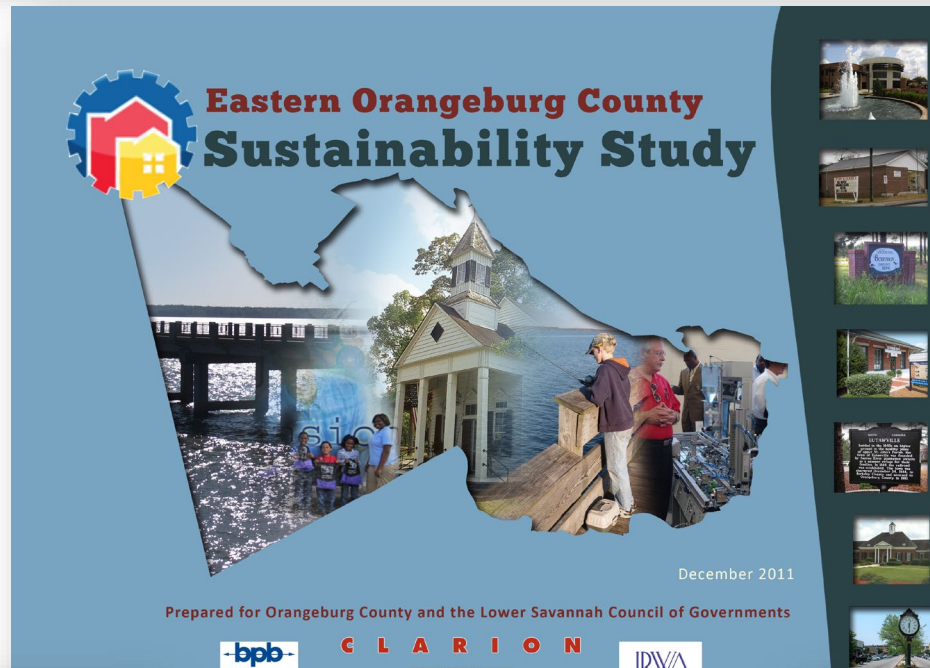
Connect with important local organizations



Share their thoughts about the future of the County

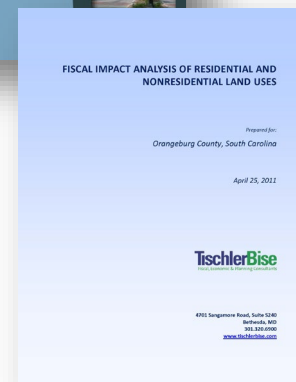
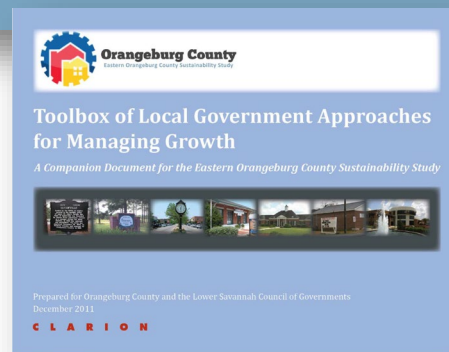
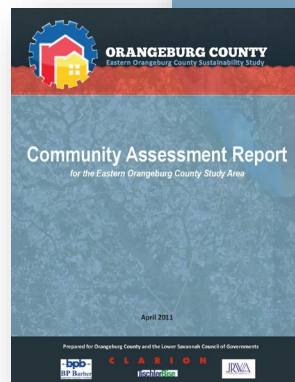
Input will shape short-term and long-term planning efforts, including the Orangeburg County Sustainability Plan

Building on Planning Foundations



2011 Eastern Orangeburg County Sustainability Study

- **Multijurisdictional framework** to guide growth and investment in Eastern Orangeburg County
- Existing conditions and fiscal impact **assessments**
- Included **Toolbox** of strategies



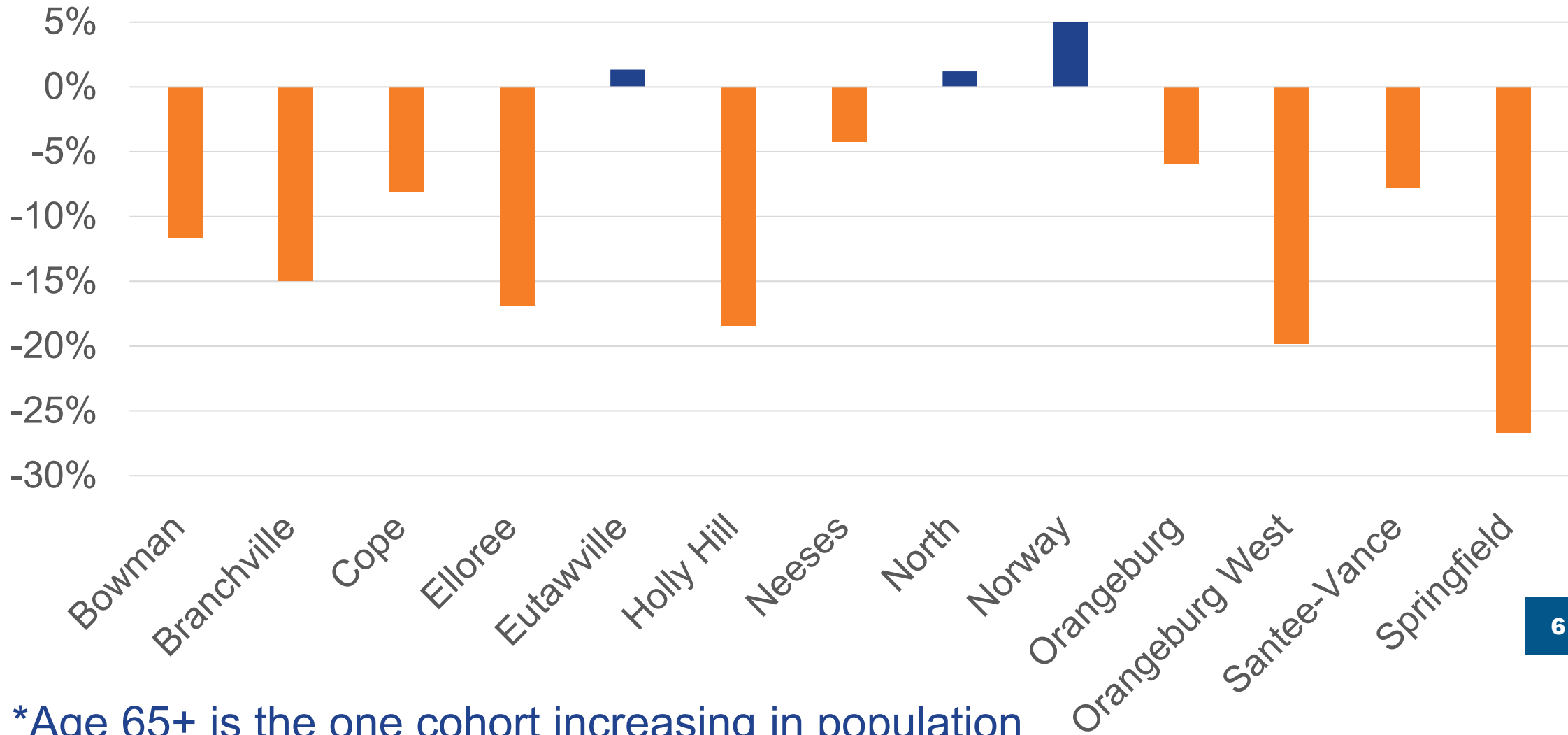


Snapshot of Our Community





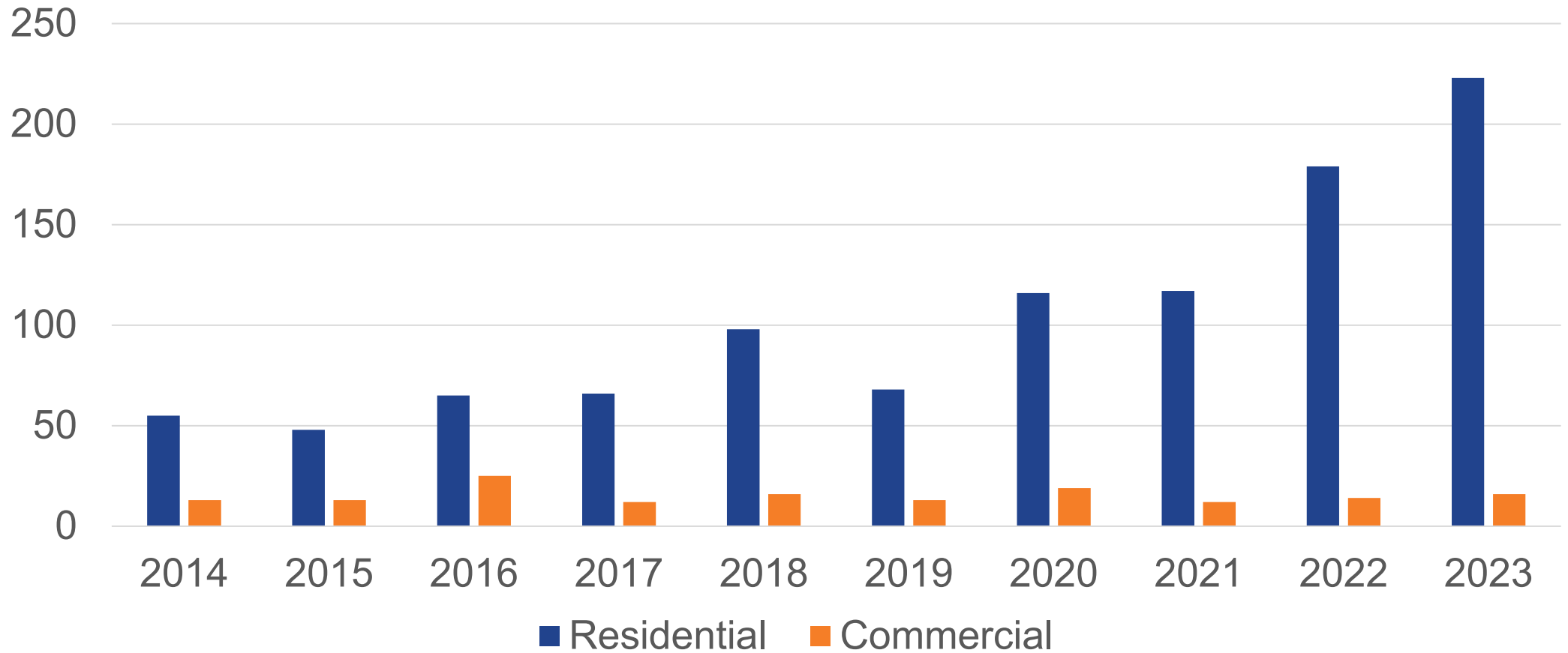
Population Change by County Subdivision, 2012–2022



*Age 65+ is the one cohort increasing in population



New Construction (Unincorporated)



*Unincorporated Orangeburg County (does not count construction in towns & city)



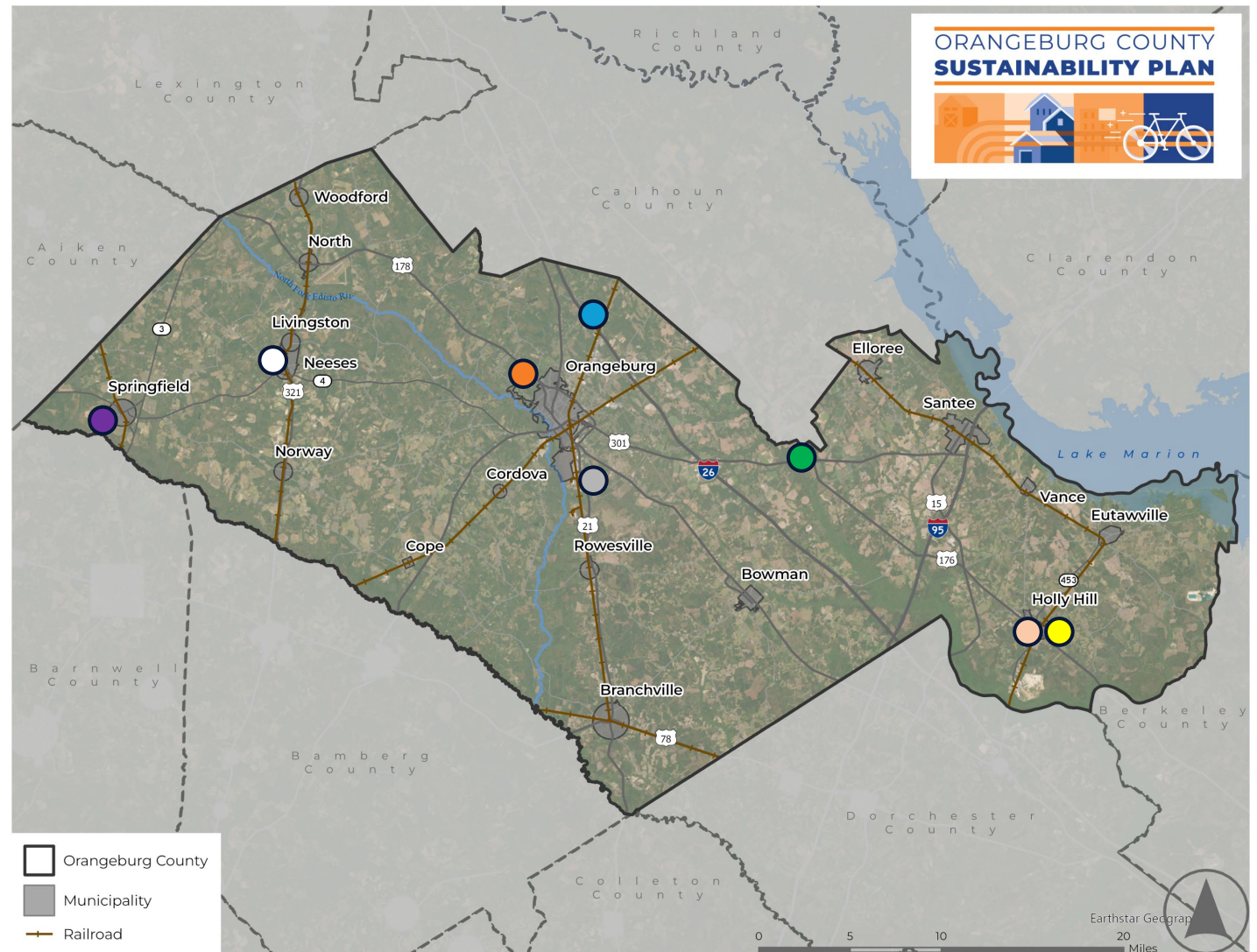
Aligning and Preparing Long-Term Growth and Investment Efforts



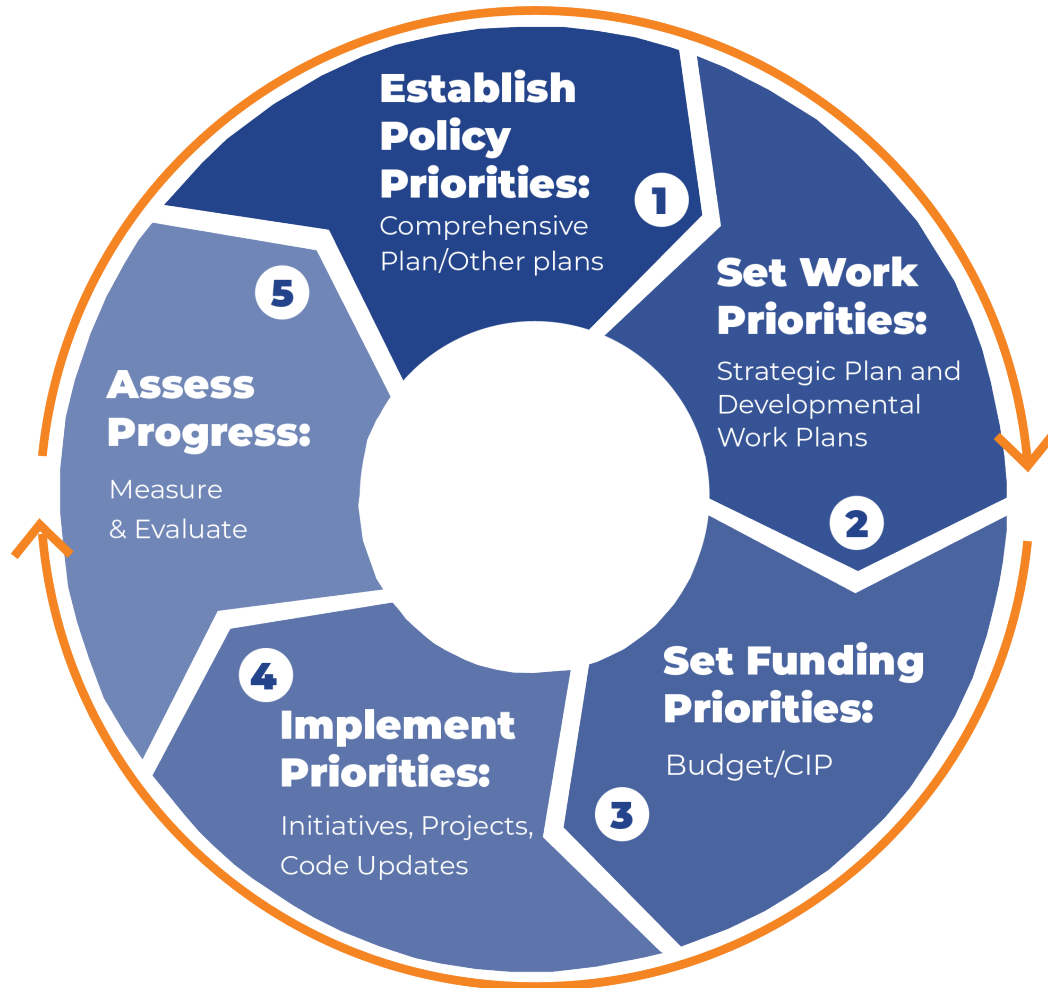
Return on Planning Investment

A few of the recent major projects and opportunities include:

- Springfield Community Center
- Western Industrial Park
- North Road Commercial
- Tri-County Global Industrial Site
- Orangeburg Power Site
- Matthews Industrial Park
- OC Tech Holly Hill Expansion
- Unity Road Community Center



Orangeburg County Sustainability Plan Purpose



Create a **multijurisdictional framework** for guiding and investing in Orangeburg County growth over the next 20 years.

Orangeburg County Sustainability Plan

The Sustainability Plan will focus on:



Identifying targeted areas to support growth and potentially areas to protect from growth



Infrastructure needed to serve growth areas



Roles of partner agencies and organizations

Orangeburg County Sustainability Plan

The Sustainability Plan will be informed by several components:



Public engagement from the Smart Growth Summit



Steering committee guidance



Analysis of existing conditions & future growth and infrastructure needs



Cost of land use study (residential and nonresidential)



Smart Growth Summit: Collecting Your Ideas!



Smart Growth Summit

Opportunity to gather inputs for...

- **Near-term** strategic planning efforts
- **Long-term** growth and infrastructure planning

Education

Economic

Housing

Development

Quality of Life

Land Development

Engagement Options

In person

STATION 2 ASSETS AND OPPORTUNITIES

Give your feedback!

If you were **promoting Orangeburg County** to people interested in living, working, or owning a business here, **what would you share** with them?

(Write your answer on a post-it and place it here.)

To improve the quality of life in Orangeburg County, **what opportunities do we need to create** for current or future residents?

(Write your answer on a post-it and place it here.)

Online



surveymonkey.com/r/orangeburgsummit



Next Steps



Next Steps

Prepare a Report on Smart Growth Summit & Online Survey Findings

- Short-Term Ideas for Inclusion in Strategic Plans of towns and county
- Long-Term Ideas for Inclusion in Sustainability Plan (Countywide)

Present Findings to Sustainability Plan Steering Committee

- December 9th

Complete Evaluation of Existing Conditions

- Energy and technology infrastructure
- Land use and development
- Transportation infrastructure
- Water and sewer infrastructure

Call to Action: Tell 5!

Tell 5 friends, neighbors, and colleagues that care about the future of Orangeburg County to participate online!



[OrangeburgCountyGrows.com](https://www.OrangeburgCountyGrows.com)

Survey



Website



[surveymonkey.com/r/orangeburgsummit](https://www.surveymonkey.com/r/orangeburgsummit)